

# G3 Plus

## Anti-Glare Face & Fingerprint Time Attendance & Access Control Terminal



**G3 Plus** is the ZKTeco first "Anti- Glare Facial Recognition" biometric terminal, with the ultimate 168 IR sensors and the latest infrared illumination technology, G3 plus is able to process precise facial recognition under strong sunlight (up to 60,000 Lux). Along with the hardware update, the G3 plus also comes with the ZKTeco latest deep learning facial recognition algorithm, which offers a whole new user experience, even users with glasses, hat or other accessories, the G3 plus still offers a smooth recognition experience.

# Features



Latest Facial 9.0 algorithm



Face Identification Operating under Strong Sunlight and Dark environment (0~60,000 lux. Illuminance)



Revolutionary SilkID Fingerprint Sensor



Outstanding Performance With Dry, Wet and Rough Fingers



Multiple Verification Modes: Face / Fingerprint / Card / Password



Build-in PoE



Multiple Communication Modes, Wi-Fi, TCP/IP, 3G, USB host

# Specifications (G: GL Exclusive Feature)

## Capacity

Fingerprints	5,000
Faces	3,000 (1:N) / 4,000 (1:1)
Cards (Optional)	10,000
Transactions	100,000

## Communication

TCP/IP  
USB Host  
Wiegand Output

## Access Control Interface

Lock Relay Output  
Alarm Output  
Exit Button  
Door Sensor  
External Bell

## Hardware

4.3 inch Touch LCD  
1.2GHz High Speed CPU  
Memory 128MB RAM / 256MB Flash  
G SilkID Fingerprint Sensor  
G 168 Infrared Sensors

## Standard Functions

ID Card / Work Code / WDMS  
DST / SMS / Bell Schedule  
Attendance Status Auto-Switch  
Record Query / Photo ID  
Custom Wallpaper & Screen Saver

## Special Functions

- G Precise facial recognition under strong sunlight (up to 60,000 Lux)
- G Latest ZKTeco Facial Recognition Algorithm, easy to recognize users wearing glasses and hat
- G Prevents repeated face registration

## Optional Functions:

HID Proxy / Mifare Card Reader  
Wi-Fi / 3G  
External Printer  
Battery (2,000 mAh)  
G PoE(Standard IEEE 802.3at)

## Compatibility

ZKTime.Web / Biotime 7.0  
ZKBiobsecurity 3.0 / ZKAccess 3.5  
WDMS

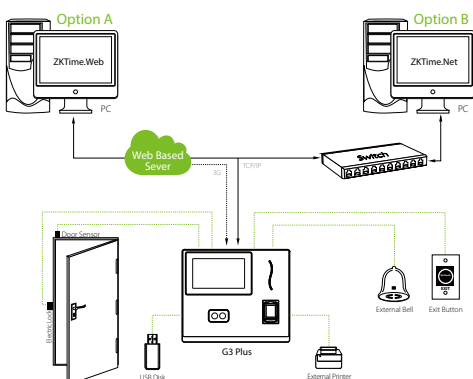
## Additional Info

Working Temperature: 0 °C ~ 45 °C  
Dimensions: 199.2 × 171.8 × 131.3 mm  
ZKFace v9.0 & ZKFinger v10.0 Algorithms  
Fingerprint: FAR≤0.0001% FRR≤0.01%  
Face: FAR≤0.001% FRR≤1%

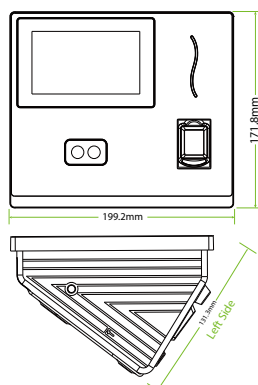
## Power

Operating Voltage 12V DC  
Current Draw < 500 mA

# Configuration



# Dimensions (mm)



ZKTECO CO.,LTD.  
www.zkteco.com  
E-mail: sales@zkteco.com



© Copyright 2017. ZKTECO CO.,LTD. ZKTeco Logo is a registered trademark of ZKTeco or a related company. All other product and company names mentioned are used for identification purposes only and may be the trademarks of their respective owners. All specifications are subject to change without notice. All rights reserved.